

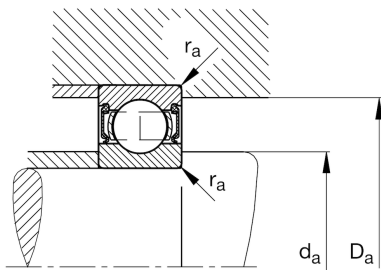
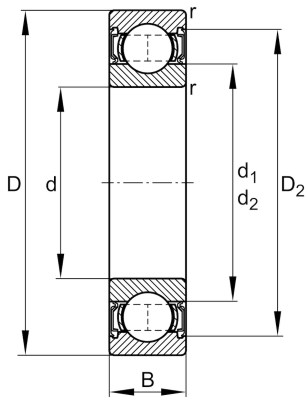
FAG

6020-2RSR

Deep groove ball bearing

Schaeffler ID:
0167183560000Deep groove ball bearing 60...-2RSR,
single row, seals, steel sheet metal cage

Technical information

**Main Dimensions & Performance Data**

d	100 mm	Bore diameter
D	150 mm	Outside diameter
B	24 mm	Width
C_r	64.000 N	Basic dynamic load rating, radial
C_{0r}	54.000 N	Basic static load rating, radial
C_{ur}	3.050 N	Fatigue load limit, radial
n_G	2.300 1/min	Limiting speed
	1,32 kg	Weight

Dimensions

r_{min}	1,5 mm	Minimum chamfer dimension
D_2	137,3 mm	Caliber diameter outer ring
d_1	116,2 mm	Shoulder diameter inner ring

Mounting dimensions

$d_{a min}$	107 mm	Minimum diameter shaft shoulder
$D_{a max}$	143 mm	Maximum diameter of housing shoulder
$r_{a max}$	1,5 mm	Maximum fillet radius

Calculation factors

f_0	15,8	Calculation factor
-------	------	--------------------

Temperature range

T_{min}	-20 °C	Operating temperature min.
T_{max}	100 °C	Operating temperature max.